



# Day of Learning

## Thursday AGENDA

8:00 am (EST)	Arrive at Headquarters, Prepare for Hill Visits
9:00 am (EST)	Leave for Capitol Annex
9:30 am (EST)	Meet with Legislators
11:30 am (EST)	*Sen. Education Committee Capitol Annex Room <b><u>149</u></b>
Noon (EST)	*House State Government Capitol Annex Room <b><u>171</u></b>
2:00 pm (EST)	Watch House/Senate in Session
3:30 pm (EST)	Fill out Activist Data sheet Online or Fill Out Paper Copy & Return it to KEA HQ Click <a href="#">here</a> for Online Data Sheet, enter <a href="http://bit.ly/KYGA2020DOL">http://bit.ly/KYGA2020DOL</a> , or scan the QR code your computer, tablet, or phone.



**\*LUNCH** should be taken when you have time. The annex cafeteria closes at **2:00 pm**.

---

Share pictures on social media:

**#ILOVEMYKYPUBLICSCHOOL & #EMPOWEREDEDUCATOR**

Contacts:

Eddie Campbell, KEA President  
606-454-4583

Joel Wolford, KEA Vice President  
270-566-2870

# KENTUCKY GENERAL ASSEMBLY KEY MEMBERS & NUMBERS

<b>Legislative Message Line</b>	1-800-372-7181
<b>Bill Status Line</b>	1-866-840-2835
<b>Calendar (Meetings) Line</b>	1-800-633-9650
<b>TTY Message Line</b>	1-800-896-0305
<b>En Español</b>	1-866-840-6574

## HOUSE LEADERSHIP



**DAVID OSBORNE**

Speaker



**DAVID MEADE**

Speaker Pro Tempore



**BAM CARNEY**

Majority Floor Leader



**SUZANNE MILES**

Majority Caucus Chair



**JONI JENKINS**

Minority Floor Leader



**DERRICK GRAHAM**

Minority Caucus Chair



**ANGIE HATTON**

Minority Whip



**REGINA HUFF**

Education Chair



**STEVEN RUDY**

A&R Chair

## SENATE LEADERSHIP



**ROBERT STIVERS**

President



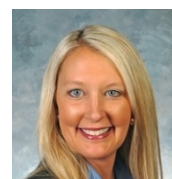
**DAVID GIVENS**

President Pro Tempore



**DAMON THAYER**

Majority Floor Leader



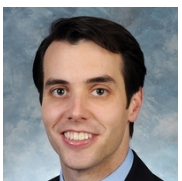
**JULIE RAQUE ADAMS**

Majority Caucus Chair



**MIKE WILSON**

Majority Whip



**MORGAN MCGARVEY**

Minority Floor Leader



**JOHNNY RAY TURNER**

Minority Caucus Chair



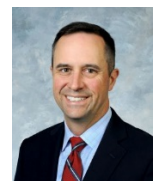
**DENNIS PARRETT**

Minority Whip



**MAX WISE**

Education Chair



**CHRIS MCDANIEL**

A&R Chair

# KEA'S 2020 LEGISLATIVE PROGRAM AT A GLANCE

## KEA VISION

KEA Is The Preeminent Voice for Quality Public Education.

## KEA MISSION

We Unite, Organize, and Empower Members to Advocate For Themselves and To Ensure A Quality Public Education for Every Kentucky Student.



I AM AN  
**EMPOWERED**  
EDUCATOR  


## KEA'S HIGHEST LEGISLATIVE PRIORITIES

- Ensure A Free & Appropriate Public Education for ALL of Kentucky's Students
- Increase State Revenue Through Non-Regressive Tax Reform and Other Appropriate Means
- Fully Fund Public Pension Plans
- Maintain A Defined Benefit in All Public Pension Plans

## KEA'S LEGISLATIVE GOALS

- A. Advocate for Equitable & Adequate Funding for P-12 Education
- B. Advocate for A High-Quality Education for Every Public-School Student in the Commonwealth
- C. Advocate for Strong Professions
- D. Advocate for Adequate School Employee Compensation, Sufficient Retirement Benefits & Affordable Health Insurance for Public School Employees & Their Dependents



***KEA'S Legislative Program Is Approved Annually by The Delegate Assembly.***



## TIPS FOR MEETING WITH LEGISLATORS

### REASONS TO MEET WITH YOUR LEGISLATORS

- Legislators are sincerely interested in getting their constituents' views on legislation. They want to hear from you!
- The legislator may have a number of ideas and suggestions to help you focus your efforts.
- Meeting with your legislators can help you gauge the support or opposition to your position.
- Meeting with a legislator and providing information allows you to become a resource to him or her. As a result, the legislator's staff may call on you for input in the crafting of legislation.

### SCHEDULING THE MEETING

- It is always better to call and schedule the meeting in advance. However, if you have not scheduled a meeting prior to today, you can simply stop by a legislator's office, but keep in mind that they may not be there or they may be busy.
- For future appointments, it is better to call than to write asking for an appointment, since calling makes it easier to find an acceptable date.
- It is always more effective if you, as a constituent, ask for an appointment, rather than having your organization's staff make the request.

### *NAVIGATING LEGISLATIVE OFFICES IN THE ANNEX*

#### *NAVIGATING SENATE OFFICES*

- You must use the stairs or the elevator in the middle of the Capitol Annex close to the tunnel to enter the 2<sup>nd</sup> floor.
- You can walk directly to your Senator's office on the 2<sup>nd</sup> floor of the Capitol Annex by finding the correct room number. Once you find the correct room number, let the receptionist know who you would like to meet with, if you have an appointment, and if you are his/her constituent.
- If your Senator is not available, you can leave a Step Up for Kids note with the receptionist or ask when your Senator will be available to meet later in the day.

#### *NAVIGATING HOUSE OFFICES*

- Look to see if your Representative's office is on the 3<sup>rd</sup> or 4<sup>th</sup> floor, and take the center elevator or stairs to that floor. There will be a large desk with a receptionist on each floor.

- Let the receptionist know which Representative you would like to meet with, if you are his/her constituent, and whether or not you have an appointment. The receptionist will most likely give you a slip to fill out with your information.
- The receptionist will then call back to your Representative's office to see if he/she is available to meet or is expecting you. Once the receptionist has approval from your Representative to let you go back to his/her office, you will be given a visitor's badge to wear. Then, head through the glass doors to your Representative's office.

## DURING THE MEETING

- Be prepared. Bring any simple and easy to understand materials with you. Prepare your remarks ahead of time.
- If you visit in a group, have one person take the lead. She/he can introduce the group, make a brief statement about why you are there, and then call on various people in the group to talk about their particular concerns.
- Be certain that members of your group agree on the objectives for the meeting and on the points to be addressed.
- Start the meeting off with a couple minutes of small talk to build some rapport, but make sure you get to the point rather quickly. Most visits last twenty minutes or less.

## PRESENTING YOUR POSITION

- Present your view with conviction, but don't put the legislator on the defensive.
- It helps to cover your issue from the legislator's perspective, tying it in with his or her past votes or interests.
- Listen attentively.
- The legislator's opening discussion with you will often give you clues about how to connect your issue with his/her concerns.
- If you don't have the answer to a legislator's question, say so. Tell the legislator you will provide the information, and then be certain that you do.
- Be prepared to address concerns raised by legislators about your issue, but make sure you do not become defensive if you disagree with them. Respond to their concerns with facts in a calm manner and ask them to consider the points you've raised.
- Provide easy-to-follow information, both when speaking and in a fact sheet that you leave with the legislator.
- Include a brief description of your issue in the fact sheet, why it is important to your organization, and the action that you want the legislator to take.

## AFTER THE VISIT

- After the visit, write a letter of thanks to the legislator. Be sure to remind him/her of any agreements reached, and provide any information that you promised.

*2020 Kentucky General Assembly*

**Date (MM/DD/YYYY)**

---

**KEA Member(s) Present (First & Last Names)**

---

---

---

**KEA Local(s) Represented**

---

---

---

**Email(s) (Non-School)**

---

---

---

**Legislators Present or Legislative Representative (House and/or Senate)**

*\*Please include name(s) of Legislators, even if you DID NOT meet with them.*

---

---

---

---

**Does the Legislator Support Fully Funding Public Education?**

---

---

---

---

**Does the Legislator Support or Oppose “Scholarship Tax Credits” and Vouchers?**

---

---

---

---

**Does the Legislator Support Increasing the SEEK Formula?**

---

---

---

---

**Does the Legislator Support or Oppose Fully Funding School Transportation?**

---

---

---

---

**Does the Legislator Support or Oppose Fully Funding All Day Kindergarten?**

---

---

---

---

**Does the Legislator Support Fully Funding Pensions Including the Employer (State) Contribution As Determined By the Actuarial Analysis?**

---

---

---

---

**Other Issues Discussed /Legislator Views**

---

---

---

---

**Follow Up Needed (If Any)?**

---

---

---

---



# Capitol Grounds Walking Tour

In January 1905, a special session of the Kentucky Legislature was called to consider a site for a new State Capitol building, due to the rising need for more space as well as space with modern technologies. An appropriation of \$40,000 was allotted for the purchase of the land and preparation for the new building. The site chosen was known in Frankfort as the "Hunt Place," a farm containing 33 acres in South Frankfort. The amount expended on the purchase of the grounds for the site and the work done thereon, performed by day labor, totaled \$100,000. The setting was a naturally picturesque location. Frank M. Andrews, the architect whom the commission selected to build the new Capitol, stated that "Nature herself fixed the site."

Source: C.M. Fleenor, *Kentucky's New State Capitol And its Construction*, 1910, Historic Frankfort, Inc.

The Kentucky State Capitol Grounds was one of the few state capitol ground sites designed by the Olmsted brothers, a team including step-brothers John Charles Olmsted and Fredrick Law Olmsted Jr. The brothers formed their partnership in 1898 and followed in the footsteps of their father, the notable Frederick Law Olmsted, the nation's first landscape architect. Not only did the Olmsted Brothers carry on the ideals and characteristics of their father, but they also were outstanding leaders in advancing landscape architecture to a status of honor and recognition among professions. The two brothers were among the founding members of the American Society of Landscape Architects and played an influential role in creating the National Park Service. Their notable Commissions include the United States Capitol and White House grounds, Great Smoky Mountains and Acadia National Parks, Yosemite Valley, Central Park in New York City, Atlanta's Piedmont Park, as well as entire park systems in cities such as Seattle, Boston, and Louisville.

- 1 Rose Garden**  
Created in 1961, the Rose Garden is a colorful spot on the Capitol grounds boasting many varieties of beautiful roses.
- 2 Sweetgum Tree**  
The Sweetgum Tree, also known as red gum, southern gum, American Sweetgum and American red gum, is one of the most important timber trees in the United States. It is often used for sliced veneer and furniture stock, and its even texture allows it to be stained or painted easily.
- 3 Linda Bailey Marker**  
A memorial plaque and tree are dedicated to Linda Bailey, a respected employee that began working for the state in 1967 and ended her career as Personnel Branch Manager for the Finance Cabinet. She was born in 1949 and died in 1990.
- 4 American War Mothers Marker (Bridge-Capitol Avenue)**  
Organized in 1917 in response to a call from the national government for food conservation, the American War Mothers grew rapidly in 1919, and received a national charter in 1925. The Kentucky State Chapter was organized in 1919, and multiple branches exist in the state.
- 5 National Register of Historic Places**  
The Kentucky State Capitol was built in 1910 and placed on the National Register of Historic Places in 1973.
- 6 Japanese Zelkova**  
This tree is an Asian cousin to America's native elm tree, and is popular because of its resistance to Dutch elm disease and its tolerance of urban conditions.
- 7 Kentucky Coffee Tree Marker**  
A long debate over whether the Tulip Poplar or the Kentucky Coffee Tree should serve as the Commonwealth's tree lasted from 1956 to 1994. The Tulip Poplar was victorious in the first and final outcome. Today the Kentucky Coffee Tree serves as the official State Heritage Tree.
- 8 Floral Clock Marker**  
Dedicated in 1961 as a project of the Commonwealth and the Garden Club of Kentucky, Kentucky's floral clock is the perfect photo opportunity. Boasting immense hands and a face 34 feet across, the clock is one of the largest of its kind in the world and is planted seasonally with more than 10,000 plants grown in the Commonwealth's greenhouses.
- 9 Welcome to Kentucky Marker**  
This marker highlights Kentucky's recreational opportunities, including the Kentucky State Park System.
- 10 Freedom Tree Marker**  
This tree honors those Prisoners of War who served during the Vietnam War from Kentucky.
- 11 Charles Wickliffe Marker**  
A marker and tree are dedicated in memory of Charles D. Wickliffe, general counsel and procurement law expert for the Finance and Administration Cabinet from 1966-1995.
- 12 Bert Combs Marker**  
Bert T. Combs was an important political figure in Kentucky. His political career is highlighted on this marker.



- 13 A Civil War Reprisal KHS Marker**  
The Civil War was one of the most divisive, bloody, and tragic times in our country's history, especially in the state of Kentucky.
- 14 John "Stony" Spicer**  
Marker honors John "Stony" Spicer, who died in 1993. Stony was a long time director of the Physical Plant, which is a part of the Finance and Administration Cabinet.
- 15 Capitol Interior-Rotunda Statuary**  
Beginning in 1911 with Abraham Lincoln and finished in 1963 with Alben Barkley, the Capitol's Rotunda Statuary is a fascinating chronicle of Kentucky's history and is part of the guided interior tour of the Kentucky State Capitol.



- 16 National Register of Historic Places**  
National Register of Historic Places designation plaque adorns the north entrance vestibule of the Kentucky State Capitol.
- 17 Time Capsule**  
This capsule was placed on the Capitol Grounds to be opened in the year 2076, marking the 300<sup>th</sup> year anniversary of our nation's founding.
- 18 Time Capsule**  
A time capsule was buried as part of the 75<sup>th</sup> birthday celebration of the Capitol. Its opening on June 1, 2060 will mark the 150<sup>th</sup> birthday of the State Capitol Building.
- 19 Restoration Marker**  
A major restoration of the Kentucky "New" State Capitol was undertaken during 1986-1987.
- 20 View of Capitol**  
This vantage point affords one with a picturesque view of the Capitol building and its promenade.
- 21 New Capitol KHS Marker**  
Marker describes the New Capitol's construction, funding, and architectural style.
- 22 Frankfort Chosen as Capitol KHS Marker**  
This marker chronicles the events and happenings in the history of Frankfort and its destiny as the Capital of Kentucky.
- 23 Landscape Garden**  
An area to relax, reflect and gather at the west side of the Capitol building. Future development of this area will feature walkways, benches, beautiful flowers, and areas for markers and monuments reflecting Kentucky's rich heritage.
- 24 Red Maple Tree**  
The Red Maple tree, also known as the Swamp Maple or Soft Maple, is one of the most common and widespread trees of the eastern half of North America.

- 25 Chestnut Tree**  
The American chestnut tree was once used in Kentucky for a variety of purposes, and keeping it planted is vital to not only Kentucky's forests but also to its heritage and culture.
- 26 Kentucky Coffee Tree**  
Kentucky Coffee Tree is the official State Heritage Tree.
- 27 Governor's Christmas Tree 1975 and Julian Carroll Marker**  
In 1975, Governor Julian Carroll planted a Christmas tree in honor of the first child to be born to a Governor while in office to reside at the Governor's Mansion.
- 28 A.B. "Happy" Chandler**  
This marker given by the Kentucky Chapter of the American War Mothers, honors A.B. "Happy" Chandler, who served as governor of Kentucky from 1935 to 1939 and 1955-1959.
- 29 Governor's Mansion Garden**  
The current Governor's Mansion garden, intended to convey the feel of a formal French garden, was completed during the John Y. Brown Administration as part of a major renovation from 1982-1983 of the Governor's Mansion.
- 30 Kentucky's Executive Mansion**  
The history of Kentucky's second Governor's Mansion, built in 1914, is explained on this marker by the Kentucky Historical Society. The executive residence was placed on the National Register of Historic Places in 1972.

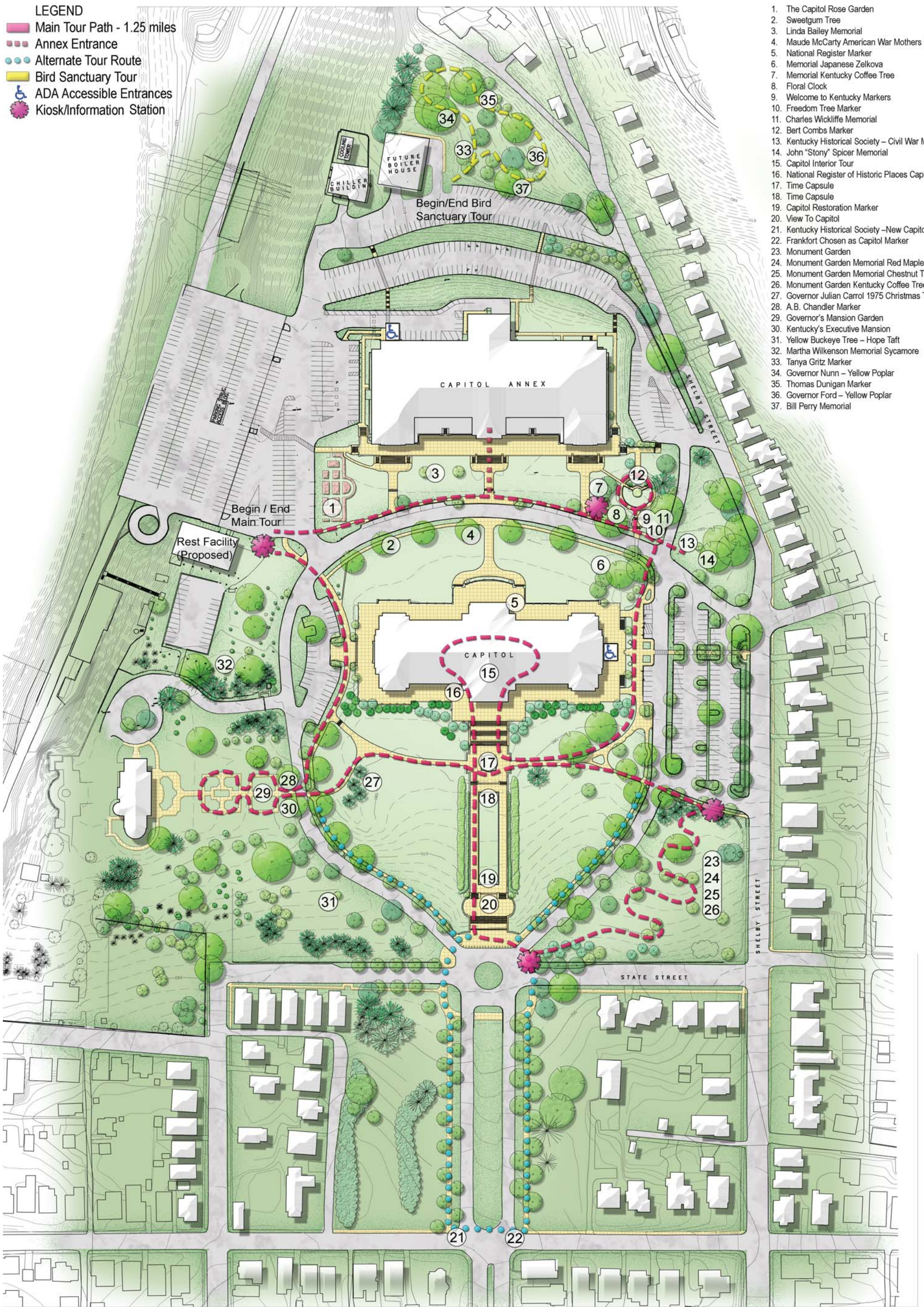


- 31 Yellow Buckeye from Hope Taft**  
A Yellow Buckeye tree was planted as part of a state tree exchange between Ohio and Kentucky, given by First Lady of Ohio Hope Taft in 2006.
- 32 Sycamore Tree from Martha Wilkinson**  
A Sycamore tree was planted by Martha Wilkinson, the First Lady of Kentucky from 1987 to 1991, wife of Wallace G. Wilkinson.
- 33 Tanya Gritz Marker**  
A Dogwood Tree was planted in the bird sanctuary in memory of Tanya Maria Gritz in 1995.
- 34 Yellow Poplar from Governor Nunn**  
A Yellow Poplar Tree, also known as the Tulip Poplar Tree was planted by Governor Louie B. Nunn in the bird sanctuary in 1970.
- 35 Thomas Dunigan Marker**  
Bird sanctuary marker in memory of Thomas L. Dunigan who served the Commonwealth as a Finance employee from 1963 to 1999.
- 36 Yellow Poplar from Governor Ford**  
A Yellow Poplar or Tulip Poplar, the official State Tree of Kentucky was planted by Governor Ford in the bird sanctuary in 1972.
- 37 Bill Perry Marker**  
Bird Sanctuary marker in memory of Bill Perry, a former employee with the office of Controller from 1990 to 2005.

LEGEND

- Main Tour Path - 1.25 miles
- - - Annex Entrance
- - - Alternate Tour Route
- Bird Sanctuary Tour
- ADA Accessible Entrances
- Kiosk/Information Station

1. The Capitol Rose Garden
2. Sweetgum Tree
3. Linda Bailey Memorial
4. Maude McCarty American War Mothers Memorial
5. National Register Marker
6. Memorial Japanese Zelkova
7. Memorial Kentucky Coffee Tree
8. Floral Clock
9. Welcome to Kentucky Markers
10. Freedom Tree Marker
11. Charles Wickliffe Memorial
12. Bert Combs Marker
13. Kentucky Historical Society – Civil War Marker
14. John "Stony" Spicer Memorial
15. Capitol Interior Tour
16. National Register of Historic Places Capitol Marker
17. Time Capsule
18. Time Capsule
19. Capitol Restoration Marker
20. View To Capitol
21. Kentucky Historical Society –New Capitol Marker
22. Frankfort Chosen as Capitol Marker
23. Monument Garden
24. Monument Garden Memorial Red Maple
25. Monument Garden Memorial Chestnut Tree
26. Monument Garden Kentucky Coffee Tree
27. Governor Julian Carroll 1975 Christmas Tree
28. A. B. Chandler Marker
29. Governor's Mansion Garden
30. Kentucky's Executive Mansion
31. Yellow Buckeye Tree – Hope Taft
32. Martha Wilkenson Memorial Sycamore
33. Tanya Griz Marker
34. Governor Nunn – Yellow Poplar
35. Thomas Dunigan Marker
36. Governor Ford – Yellow Poplar
37. Bill Perry Memorial



Tour Route

# Capitol Grounds Walking Tour

