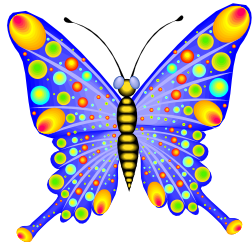


## 2016 KEA Emerging Leadership Program

The purpose of KEA's Emerging Leadership program is to identify, train and equip a racially and culturally diverse group of potential leaders to carry out the mission of KEA.



Kentucky Education Association is the preeminent voice for quality public education.

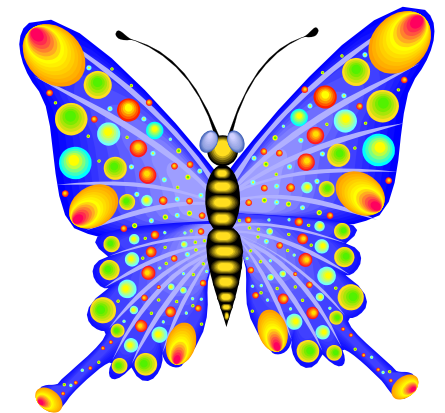
We unite, organize and empower our members to advocate for themselves and to ensure a quality public education for every Kentucky student.



KEA Headquarters  
401 Capital Avenue  
Frankfort, KY 40601

Phone: 800-231-4532  
502-875-2889  
Fax: 502-227-9002  
[www.kea.org](http://www.kea.org)

## KEA Emerging Leadership Program



June 20-22, 2016

Embassy Suites Hotel

Lexington, Kentucky

## 2016 KEA Emerging Leadership Program

### Who?

Are you are fairly new to KEA?

Do you hold newly elected or appointed leadership position?

Do you want to become more engaged in KEA activities?

You could be an Emerging Leader!

### When?



Emerging Leadership training will take place **June 20-22, 2016** at the Embassy Suites Hotel in Lexington.

Two sessions will be held.

\* All sleeping rooms are double occupancy with other participants\*



### What?

-  Leadership Styles—What is a Leader?
-  Membership
-  Communication
-  Orientation to KEA
-  Basic Legal Rights
-  Legislative and Political Action
-  Commitment to Action

### How?

Up to 60 newer KEA members and potential leaders will be selected to participate.

You may nominate yourself, a KEA leader may nominate you, or your KEA UniServ Director may nominate you.

Tear off, complete and return the form on the next panel by **May 2nd** to Susan Estes, KEA St. Matthews Office 735 Executive Park, Louisville, KY 40207

Participants selected will be notified by May 9, 2016.



Name \_\_\_\_\_

Address \_\_\_\_\_  
\_\_\_\_\_

Preferred Phone Number:  
\_\_\_\_\_

Preferred E-Mail Address:  
\_\_\_\_\_

Local \_\_\_\_\_

Work Location: \_\_\_\_\_

Position: \_\_\_\_\_

Nominated by: \_\_\_\_\_

Position: \_\_\_\_\_

Signature of Local President:  
\_\_\_\_\_

Return completed form to Susan Estes, KEA St. Matthews Office, 735 Executive Drive, Louisville, KY 40207

